

# VISUALPOWER G Series—P5 Glass LED Display

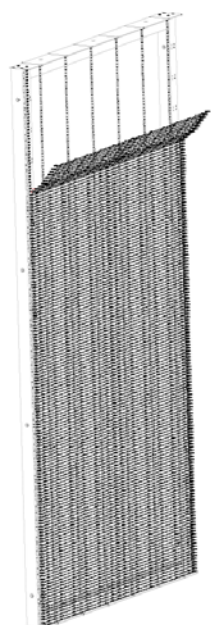
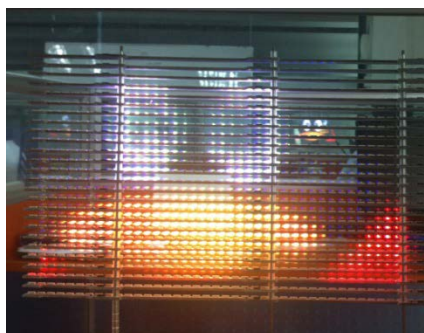


**VISUALPOWER --Bring your window to live.**

Mediatecture--Media Architecture

## •Application

- Shop Window
- Exhibition
- Building Facade



LED Display	Pixel Pitch	5mm
	Pixel Density	33333pixel/sqm
	Brightness	>5000 nits
	Viewing Angle	H:120° ; V:100°
LED Bar Unit	LED Type	1R1G1B
	Resolution (WxH)	Based on solution
	Size (LxWxH)	Based on glass size
	Transparency	>65%
LED Cabinet Section	Weight (kg)	<10 kg/sqm
	Cabinet Material	Aluminum Extrusion
	Working Humidity	10 - 90 % RH
	Working Temperature	-20° ~+ 65° Celsius degree
	Working Voltage	AC110/220V, 50-60HZ
	Maintenance Method	Rear access
	Max Power Consumption	1000 W /sqm
	Avg. Power Consumption	400 W /sqm
	Input Signal	DVI/VGA/S-video/HDMI/SDI
	Refresh Rate	>1500 Hz
	Frame Rate	50/60Hz
	Grey Level	16bits
	Color Temperature	6500-8500k
	Brightness Adjustment	256 levels
Flatness	<0.5mm	
MTBF	5000 Hrs	
Lifespan	100,000 Hrs	

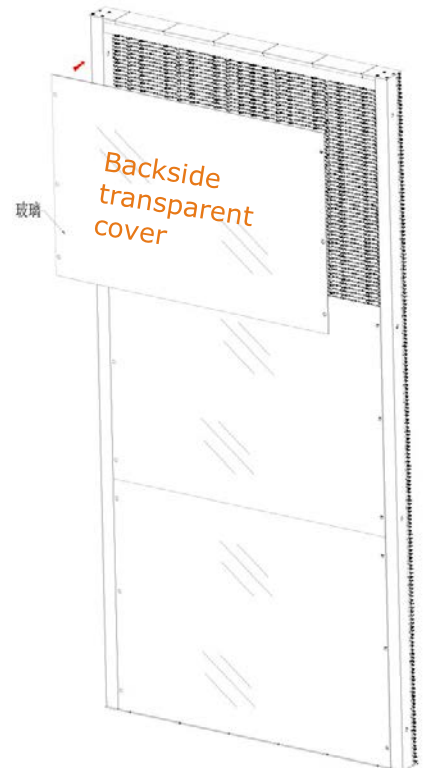
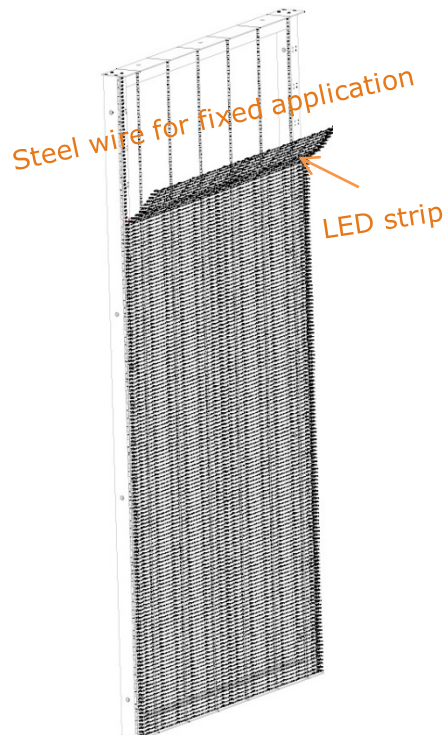
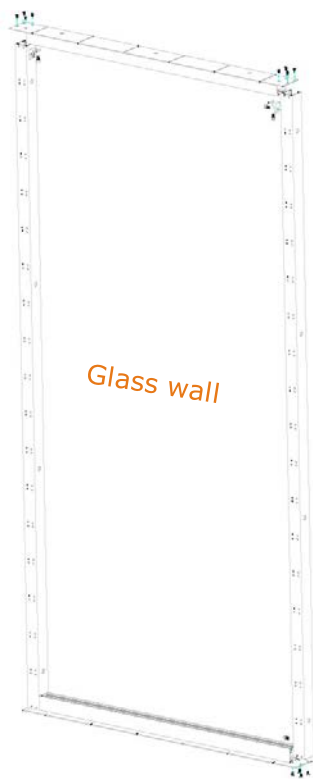
# VISUALPOWER G Series—P8 Glass LED Display

**VISUALPOWER --Bring your window to live.**

Mediatecture--Media Architecture

- **Application**

- Airport
- Museum
- Showroom



1. Set aluminum frames around the four sides of the glass wall.

2. Set the fixed glass LED display back into the frame.

3. Transparent back cover is fixed behind the LED display, and embedded into the aluminum frame.

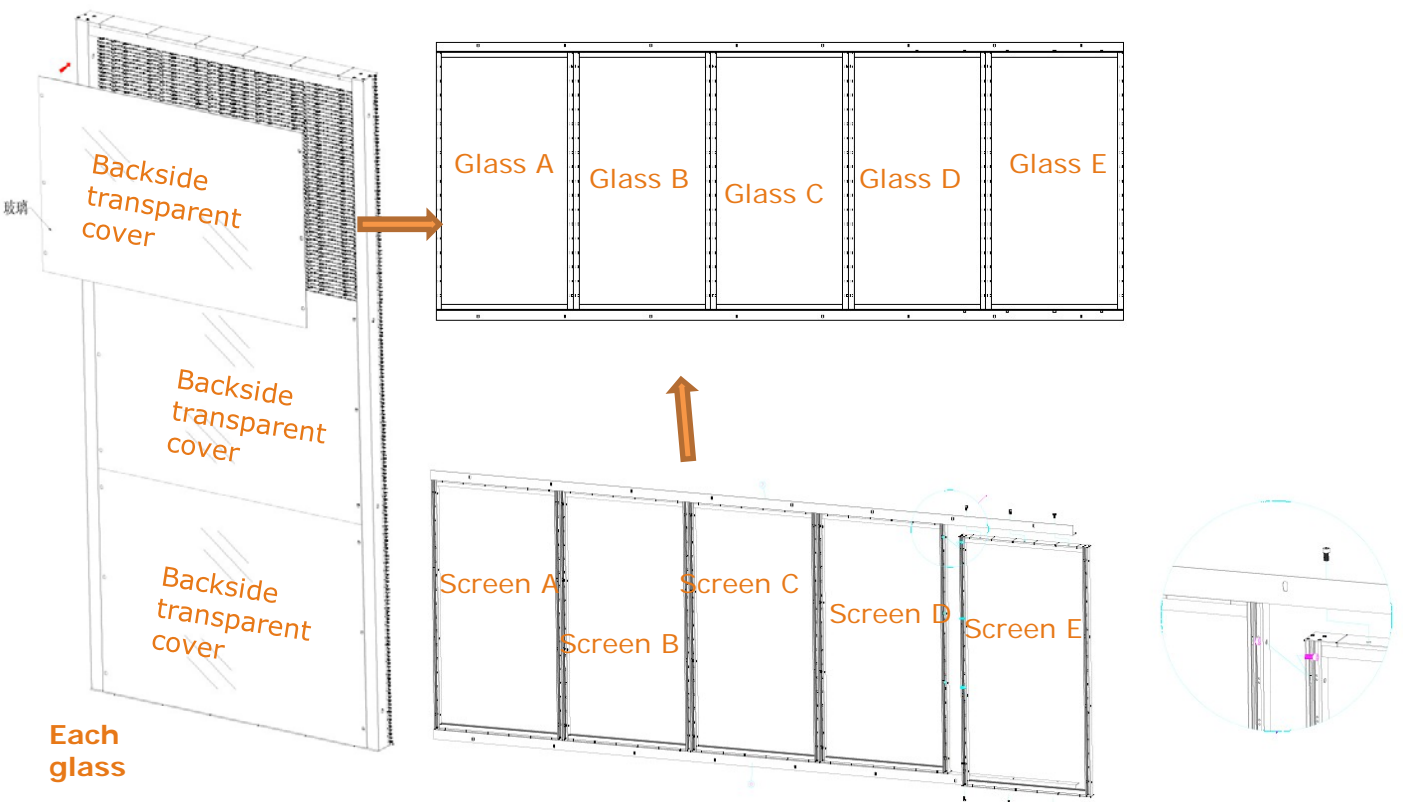
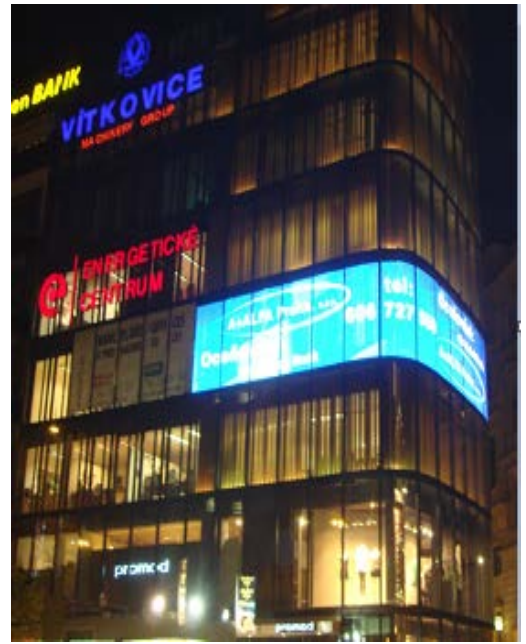
# VISUALPOWER G Series—P8 Glass LED Display

**VISUALPOWER --Bring your window to live.**

Mediatecture--Media Architecture

• **Application**

- Dealer shop
- Event
- Shopping mall



4. Full glass wall consists of every piece of glass, and the glass LED screen consists of every piece of aluminum frame, which is set small glass LED displays.

5. Full glass wall